

What is the BGA?

The BGA is a joint association of the Geological Society of London and the Royal Astronomical Society. It aims to promote geophysics in the UK and has an active political voice, regularly contributing documents to national enquiries and committees. As such it is important that it represents the views of the strong geophysics postgraduate community that we have in the UK. In order to improve the links between the committee and postgraduates a new committee position "Postgraduate Representative" has been created and Finn Illsley-Kemp elected to the position. We need your input! Email Finn with any queries or suggestions you might have for the committee and we will make sure to address it. See the website for contact details or tweet us.

BGA PGRiP Meeting 2015

The BGA postgraduate research in progress meeting was hosted at the University of Southampton this year and was a great success. Over 50 students from across the country attended and the standard of work was extremely high. Topics included halokinesis, geomagnetism, deep Earth seismology and many others. We were also privileged to have three excellent invited speakers. Jason Morgan of Royal Holloway discussed serpentinization, while Gareth Collins of Imperial College spoke on lunar impact craters and what they can tell us about the early solar system. The Bullerwell lecture for 2015 was given by Tim Wright from the University of Leeds who discussed his work on fault

zone mechanics and the implications for seismic hazard. We'd again like to thank Southampton, Shell and all of the organising committee for hosting such a fantastic meeting. The PGRiP meeting 2016 will be hosted by UCL. We hope to see everyone there!



PGRiP Prize Winners

Talk Winner: Robert Green, University of Cambridge, "*Triggered earthquakes suppressed by an evolving stress shadow from a propagating dyke: Bárðarbunga Volcano, Iceland*"

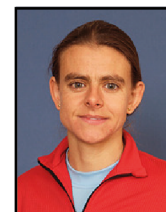
Runner Up: Bedanta Goswami, University of Southampton, "*Resistivity image beneath an area of active methane seeps in the continental slope of West Svalbard margin*"

Poster Winner: Simon Stephenson, University of Cambridge, "*A Cenozoic record of uplift, erosion and dynamic support: examples from Madagascar*"

Runner Up: Melanie Siegburg, University of Southampton, "*Tectono-magmatic interaction at the Boset volcanic complex in the Main Ethiopian rift*"

Bullerwell Lecture Awarded to Pippa Whitehouse!

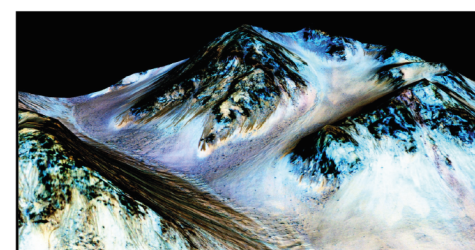
Congratulations to Pippa Whitehouse of the University of Durham for being awarded the Bullerwell Lecture for 2016! Pippa



studies how the Earth system responds to the loading and unloading associated with the glacial cycle, including solid Earth deformation, sea level change and the volume of global ice sheets. You'll be able to see Pippa's talk at EGU next year and at the PGRiP meeting at UCL.

Geophysics News

Flowing water on Mars! NASA has used an imaging spectrometer to investigate dark, seasonal streaks on the surface of the red planet and has found considerable evidence to suggest that they are caused by the shallow subsurface flow of liquid water.



Ancient Magnetic Field. The Earth's magnetic field may be much older than we previously thought. Work published in *Science* studied ancient rocks from Western Australia and found remnants of a magnetic field stretching back to 4.2 billion years ago. This would have important implications for the initiation of the dynamo and also suggests an early start to plate tectonics, as these two processes are thought to be linked.

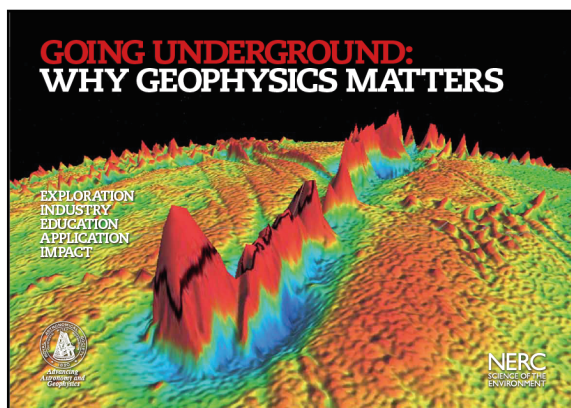
BGA Committee Meeting Summary

Postgraduate Interaction: The committee wants to increase it's level of communication with the postgraduate community. We therefore encourage all geophysics postgraduates to sign up to the official JISC Mail at GEOPHYSICS@jiscmail.ac.uk, this features the latest geophysics news and adverts for PostDocs and PhD studentships. Remember to also have a look at the new BGA website.

Migration Advisory Committee: The committee is concerned that proposed new restrictions will significantly impact the International Seismological Centre (ISC) and their ability to recruit staff due to the rise in the Tier 2 visa threshold. The committee also notes that academic salary scales means that many academic institutions will be impacted. The BGA committee will encourage a move to put the ISC onto the exclusion list for the Tier 2 visa threshold.

Royal Astronomical Society

An important role that the BGA plays is to provide the Royal Astronomical Society with information on geophysics which is then used in their outreach booklets. These booklets are aimed at politicians and the public and are very important for geophysics publicity. The RAS is currently working on a new booklet which details the impact of astronomy and geophysics. Any contributions from the PostGrad community would be gratefully received.



Future BGA Sponsored Meetings

BGA New Advances in Geophysics Meeting

Integrated Imaging of the Earth: This meeting will bring together geophysicists with an interest in analysing their results in an integrated way. The main focus will be on quantitative methods such as joint inversion, cooperative inversion and statistical approaches to reconciling different results. The meeting will combine presentations on new theoretical developments with case studies and applications demonstrating the advantages and problem areas of current approaches.

Date: 11th - 12th February 2016

Location: Geological Society of London

17th International Seismix Symposium

Seismix is an international symposium on seismic imaging that has been held every two years since 1984. The emphasis of the meeting is on new methods and their applications, and on advancing our understanding of crustal/lithospheric dynamics, structure and processes. It is unique in the way that it brings together the active and passive source imaging communities, and those who study the Earth from the exploration scale through to the continental scale.

Date: 15th - 20th May 2016

Location: Macdonald

Aviemore Resort,
Aviemore,
Scotland



Recent Postgrad Publications

First Recorded Eruption of Nabro Volcano, Eritrea, 2011 - Berhe Goitom et al., *Bulletin of Volcanology*, 2015

Multiple Mantle Upwelling in the Transition Zone Beneath the Northern East-African Rift System from Relative P-Wave Travel-Time Tomography - Chiara Civiero et al., *Geochimistry, Geophysics, Geosystems*, 2015

Triggered Earthquakes Suppressed by an Evolving Stress Shadow from a Propagating Dyke
Robert Green et al., *Nature Geoscience*, 2015

If you have any examples of recent publications or postgraduate outreach that you would like to feature in the next issue of the Postgraduate Newsletter then email Finn at F.Illsley-Kemp@soton.ac.uk